

Press Release
For Immediate Release

DB FUNtastic Summer

Combining Art, Sports, Dining, and Pet-Friendly Activities & Offers to Boost Local Summer Spending
Summer Spending Rewards: Spend \$600 to receive a \$100 voucher
Debut of Three Giant Pet-Themed Murals and Direct Access by Pet Bus
Auberge Discovery Bay Hong Kong's Pet-friendly Pavilion Pop-up Café Returns
Open Water Race Challenge, Discovery Bay Golf Club Junior Holiday Programmes and DB Ice Rink
Summer Freestyle Intensive Training Camp



(Hong Kong , 30 June 2026) This summer, Discovery Bay is set to launch an exciting lineup of activities, integrating four core elements: Art, Sports, Dining, and Pet-friendliness. The campaign aims to stimulate local summer consumer spending and position Discovery Bay as the ultimate destination for leisure, dining, and pet.

To capitalise on the peak summer shopping season, Discovery Bay is rolling out the "Summer Spending Rewards" programme alongside exclusive merchant offers available via the DB Mobile App. Adding to the summer vibe, three giant pet-themed murals have made their highly anticipated debut. Pet owners can travel with their furry companions on the KMB Pet Bus to DB North Plaza for the perfect photo spots. Sports enthusiasts can look forward to the 4th Discovery Bay Open Water Race Challenge, combining competition and family fun, with participation rate doubled last year. Furthermore, Auberge Discovery Bay Hong Kong proudly unveils the enhanced seaside "Pavilion Pop-up Café," returning with a charming pet-friendly theme perfect for photos.

The "DB FUNtastic Summer" campaign is set to deliver a vibrant and diverse summer experience for all visitors, driving local consumption and boosting tenant turnover throughout the holiday season.

Ms. Charlotte Ho, General Manager - Branding and Marketing of Hong Kong Resort Company Limited, stated, " This summer promotion campaign aims to encourage Hong Kong residents to stay and to boost local spending during the summer holidays, which is expected to drive business growth for Discovery Bay merchants. In line with the government's initiatives to integrate culture, sports, and tourism, as well as to promote pet economy, Discovery Bay has combined art, sports, dining, and pet-friendly experiences. We hope parents and children will take this opportunity to explore the unique offerings and diverse, leisurely lifestyle that Discovery Bay has to offer."



Summer Spending Rewards: Enjoy a HK\$100 Voucher and Up to 10 Free Ferry Rides

As the ultimate holiday getaway, Discovery Bay combines diverse dining, shopping, and entertainment experiences. This summer, Discovery Bay is bringing you exciting rewards:

Reward 1: Spend HK\$600 to Receive a HK\$100 Voucher

From 1 July to 31 August 2026, customers spending HK\$600 or more* at designated dining, shopping, or entertainment merchant in DB Plaza, DB North Plaza, and D'Deck (maximum of 2 same-day electronic receipts) and following @visitdiscoverybay Facebook or Instagram can redeem HK\$100 DB Voucher or HK\$100 PARKnSHOP Voucher. In addition, the DB App will feature a variety of merchant offers, making your trip to Discovery Bay even better value for money!

Redemption location and time: Concierge, DB Plaza (12:00 – 21:00)

(*Each receipt must be at HK\$100 or above.)

Reward 2: Weekend & Public Holiday Exclusive – Free Ferry Rides Offer Upgrade

From 1 July to 31 August 2026, visitors can enjoy an exciting free rides upgrade on weekends and public holidays. Discovery Bay currently offers a year-round Spend & Ride offer: with a same-day single electronic receipt of every HK\$250 per person at designated restaurants, retail shops, Auberge Discovery Bay Hong Kong's restaurant and bar, or the DB Ice Rink, you can enjoy up to 4 free return ferry or bus rides. On top of that, this summer brings an upgraded offer:

- Spend HK\$1,500 or more to redeem 1 additional free ferry ticket,
- Receive 1 extra free ferry ticket for every additional HK\$500 spent thereafter,
- **Spend HK\$4,000 or more to redeem up to a maximum of 6 additional ferry tickets.**

Combined with the year-round offer, you can enjoy **up to 10 complimentary one-way ferry rides!**

Redemption location and time: Concierge of DB Plaza and Concierge of Auberge Discovery Bay Hong Kong (12:00 – 23:55)

(Offers are available on a first-come, first-served basis while stocks last. Please refer to the VisitDiscoveryBay website for the list of eligible merchants.)

Local Artists Bring Cats and Dogs-themed Murals to Life, Showcasing the Vibrancy of Discovery Bay’s Pet-Friendly Community

Earlier, Discovery Bay collaborated with Art Dreamers to revitalise three murals at DB North Plaza. The creative inspiration for these murals is drawn directly from Discovery Bay's leisurely and pet-friendly environment. The artists participating in the creation of the Discovery Bay Art Walls (DB Art Walls) include: Mr. Gabriel Li, Chairman of The Hong Kong Society of Illustrator; Ms. Sylvia Yeh, Committee Member of The Hong Kong Society of Illustrator; Mr. Li Hok-fung, Senior Art Instructor, Art Dreamers (Creator of The Yau Ma Tei Cat Mural); and Ms. Kam Shing-yan, Mural and Stone Painting Artist. Centred on cat and dog themes, the four artists have infused the unique characteristics and elements of Discovery Bay into their creations, each bringing the vision to life through their distinct artistic styles.



KMB Pet Bus Offers Direct Access to Discovery Bay; A New Wellness Haven for Furry Friends at DB Plaza

Discovery Bay is dedicated to fostering a pet-friendly community, with pet-welcoming shopping malls and facilities. In May 2025, the first DB Pet Bus service was launched, connecting various areas of Hong Kong to Discovery Bay.

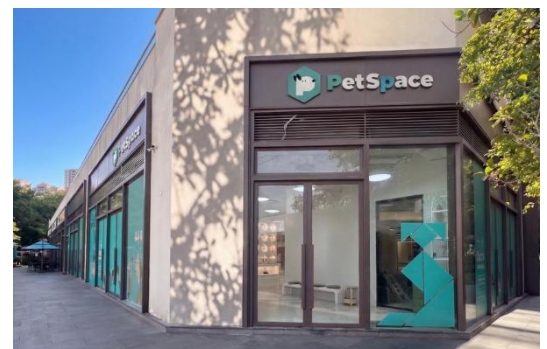


Currently, the KMB’s Pet Bus has added drop-off and pick-up points in Discovery Bay with a daily route from West Kowloon Cultural District to Discovery Bay via Nam Cheong, Tsing Yi and Ma Wan; making it convenient for pet owners to bring their furry friends to check out and take photos at the art walls.

Bus Route PB5	West Kowloon Cultural District ⇄ Nam Cheong ⇄ Tsing Yi ⇄ Ma Wan ⇄ DB North Plaza / Hotel ⇄ DB Plaza
Departs from West Kowloon Cultural District (Daily Route):	Monday to Friday: 12:00, 14:00, 16:00, 18:00 Saturday, Sunday, and Public Holidays: 10:00 – 19:00 (Departs every 45 mins)
Online Booking:	Download the KMB App 1933 and purchase tickets via the "Pet Bus" page.

In addition, Pet Space Discovery Bay has officially landed at DB Plaza in May with a brand-new look!

More than just providing professional general veterinary consultations, preventive treatments, vaccinations and general surgeries, the new clinic has introduced a highly diverse range of pet rehabilitation and physiotherapy treatments—such as hydrotherapy, veterinary acupuncture, and cold laser therapy. They also feature a dedicated supplement and care zone with a curated selection of premium health products for the daily wellness needs of pets.



Alongside regular professional health seminars and sharing sessions, the new clinic boasts a dedicated outdoor space to promote human-pet bonding. In the future, they will organise dog behaviour training workshops and pet yoga, designed to provide holistic care for every furry family!

4th Discovery Bay Open Water Race Challenge

Dedicated to promoting sports development and a healthy lifestyle, Discovery Bay regularly organises a diverse range of sport events. This year, the 4th Discovery Bay Open Water Race Challenge, organised by Open Water Swim Series Hong Kong, is set to take place on Sunday, 30 August 2026.



Title-sponsored by Discovery Bay, the event offers swimmers an exhilarating open-water experience against the backdrop of Discovery Bay's spectacular coastline. The challenge is open to swimmers of all ages, featuring a variety of distances to suit different abilities. Participants can choose from 3.8km solo, 1.7km solo, 400m solo, or 400m relay races. Starting points will be set at Tai Pak Beach, San Pak Wan, or the Disneyland Resort Pier, with all races concluding at the Tai Pak Beach finish line.

Online registration will open in around late June and early July. For more information and to register, please visit the official event website at www.eventshorizons.com.

Auberge Discovery Bay Hong Kong's Pavilion Pop-up Café Returns

This summer, Auberge Discovery Bay Hong Kong proudly unveils the enhanced "Pavilion Pop-up Café," returning with a charming pet-friendly theme. Running from 5 July to 30 August 2026, the café will be open exclusively on Saturdays and Sundays from 12:00 noon to 7:00 pm, inviting guests to unwind by the seaside with their beloved pets.

The Pavilion will be transformed into a limited-time pop-up café, offering a tranquil and scenic coastal setting where guests and their furry companions can unwind and create unforgettable summer memories. A curated selection of refreshing beverages and delicate desserts will also be available on-site, adding a cool and indulgent touch to the season.



Whether visiting with loved ones, friends, or four-legged companions, guests can immerse themselves in the gentle sea breeze and elegant surroundings, capturing picture-perfect moments throughout the day.

For enquiries, please call (852) 2295 8299 or WhatsApp (852) 6317 3526.

Discovery Bay Golf Club Welcomes Young Golfers with Exciting Junior Holiday Programmes

This summer, Discovery Bay Golf Club is delighted to offer two specially-designed Junior Holiday Programmes:

- 1-Day First Swing Clinic – Tailored for children aged 4–6, providing a fun and gentle introduction to the sports.
- 4-Day Performance Prep Camp – Designed for junior golfers of all skill levels aged 6–14. Unlike most junior programmes in Hong Kong that are limited to driving ranges or short-game areas, this camp offers a rare and valuable opportunity for on-course practice. Participants will step onto Discovery Bay's course to experience real playing conditions, where they will learn course management, shot selection, and on-course decision-making under expert coaching – an experience seldom available to young golfers elsewhere in Hong Kong.
- 2-Day Tournament Prep Camp – High-intensity tournament training for advanced juniors (ages 11–17). Our low 3:1 student-to-coach ratio ensures your child gets tailored, one-on-one guidance during supervised 9-hole rounds and comprehensive performance debriefs—building the mindset, strategy, and confidence they need to shave strokes off their game.



The above programmes aim to inspire a love for golf while building confidence and skills in a supportive, world-class environment.

For details, please visit: <https://www.dbgc.hk/icms/template?series=368&article=6946&lang=EN>

DBIR Summer Freestyle Intensive Training Camp

This summer, DB Ice Rink presents the Summer Freestyle Intensive Training Camp, a structured summer training programme designed for figure skaters at different levels and targets.

- Freestyle Beginner to Intermediate level: Targeting pre-ISU skaters and athletes developing under 1.5 air rotations, this camp is led by Coach Matthew.
- Freestyle Intermediate to Advanced Level (Elite): Targeting aspiring skaters on the path to professional athletes and the national team, this camp is led by Coach Lincoln and Joanna. This camp introduces international training structures, featuring endurance and footwork drills and off-ice conditioning. Through the special ISI & ISU Off-Ice Seminar, coaches will present an In-depth analysis of competition rules in order to enhance students' competition readiness to achieve results.

2026 SUMMER 夏季
FREESTYLE INTENSIVE TRAINING CAMP
花式溜冰特訓夏令營

Be Powerful - Make Progress - Achieve Results
發揮力量 - 不斷進步 - 取得成果

Freestyle Intermediate to Advanced Level Course (Elite)
花式溜冰中級至高級課程 (菁英)
Date: 20 July to 1 August
日期: 7月20日 至 8月1日

Freestyle Beginner to Intermediate Level Course
花式溜冰初級至中級課程
Date: 15 July to 15 August
日期: 7月15日 至 8月15日

立勤教練
Coach Lincoln Yuen

蘇怡教練
Coach Joanna So

梁冠鴻教練
Coach Matthew Leung

DB Ice Rink

DISCOVERY 愉景灣 DB | Live To Discover 生活 細味自愉

For enquiries and enrolment, please contact DB Ice Skating School at 2234 6678, WhatsApp 5636 7300 or email to course@dbicerink.com.

For more information on Discovery Bay and promotion details:

Website	www.visitdiscoverybay.com
Facebook:	@VisitDiscoveryBay
Instagram:	@visitdiscoverybay
Email:	explore@visitdbay.com

For high resolution photos, please click: <https://bit.ly/4xGKsoZ>

The End

About Hong Kong Resort Company Limited

Hong Kong Resort Company Limited (“HKR”) is the sole developer of Discovery Bay, a renowned resort-style residential community located in Lantau Island, Hong Kong. Since 1977, HKR has been continuously developing Discovery Bay for more than four decades. HKR also provides quality residential and commercial property management services, convenient land and sea transportation, and an array of hospitality services, including hotel and membership sports clubs, and a wide diversity of leisure facilities for Discovery Bay, making it a self-sustained community.

HKR is a 50:50 joint venture owned by HKR International Limited and CITIC Pacific Limited.

About Discovery Bay

Situated in the northeast of Lantau Island, Discovery Bay is Hong Kong's ultimate resort-style coastal getaway, spanning approximately 650 hectares with a serene backdrop of mountains and sea.

Discovery Bay boasts sophisticated urban planning and a variety of leisure facilities, including four major premium clubs: Discovery Bay Golf Club, Lantau Yacht Club, Club Siena, and Discovery Bay Recreation Club. It also features the seafront al fresco dining destination D’Deck, DB Plaza, and DB North Plaza, bringing together over 50 restaurants and shops to offer a diverse range of shopping and dining choices. Prominent landmarks such as the Auberge Discovery Bay Hong Kong, the Pavilion, and DB Ice Rink further enhance the resort living style for residents. The Multi-Recreation Centre set to debut in 2027, will further elevate the resort-style living experience for residents.

As Hong Kong’s pioneering “Eco-friendly Town”, Discovery Bay features two-thirds of its expanse dedicated to green spaces, allowing waterfront living unfolds at its own pace. It includes a 400-metre-long Tai Pak Beach, reservoir, hiking and jogging trails, and mangrove, providing a pleasant and liveable community. Discovery Bay also features DBee Oasis, a new conservation area providing an ideal habitat for bees and other pollinators, reinforcing the sustainable development of the urban ecosystem.

Discovery Bay offers a diverse range of educational facilities, featuring secondary, primary, and kindergartens, such as the ESF Discovery College, Discovery Bay International School, and S.K.H. Wei Lun Primary School.

Discovery Bay is served by a comprehensive transport network. This includes ferry services from DB Pier and DB North to Central, as well as bus services to the Hong Kong International Airport, the Hong Kong-Zhuhai-Macao Bridge Hong Kong Port, Tung Chung MTR Station and Sunny Bay MTR Station. Both urban and Lantau taxis can access DB North. Government approval has been granted for DB Times Square, the first transport interchange complex planned for DB North, offering over 160 parking spaces. Discovery Bay is also served by KMB's pet bus, providing a convenient alternative for residents and visitors alike.

As a one-of-a-kind resort-style residential community, Discovery Bay offers a diverse array of waterfront experiences for couples, friends, and families throughout the year. From festive celebrations and outdoor land and sea sports to international culinary delights, Discovery Bay truly epitomises a vibrant and unparalleled lifestyle destination.